



# HikCentral Professional

**HIKVISION**®

**CENTRAL.  
COLLABORATIVE.  
INTELLIGENT.**



# CORE VISION

At Hikvision, we continually develop and deliver the very best end-to-end solutions in the security surveillance industry. In that spirit, the newly released HikCentral Professional is a comprehensive, AI-empowered surveillance platform that makes easy-to-use central management available everywhere it is needed.

In order to provide project-specific solutions, additional functions and services from collaborative partners are essential. Therefore, our video management platform is designed to be Central, Collaborative, and Intelligent.



---

## CENTRAL

HikCentral Professional is completely centralized to achieve vast integration capabilities and deliver more powerful solutions.

It integrates and expands devices on a VMS system, and enhances control to achieve maximum security for years to come.

---

## COLLABORATIVE

HikCentral Professional empowers partnerships, enhances value for the user, and delivers extensive benefits across a wide range of vertical markets.

---

## INTELLIGENT

HikCentral Professional takes the latest AI technologies to the next step, leading the security industry as well as technological innovations in various applications.



# WHAT IS HIKCENTRAL PROFESSIONAL?

HikCentral Professional is a highly effective platform, which has been developed to improve central Video Management Systems (VMS) and integrate related hardware. It represents a new breed of video surveillance components, offering customers what they need to launch a multitude of smart applications over a wide expanse of industries.





# HIKCENTRAL PROFESSIONAL OVERVIEW

---

## **SYSTEM**

System Architecture  
Key Advantages

---

## **VIDEO**

Live View  
Playback  
Video Network Optimization  
Smart Wall  
Video Analysis  
Thermal Imaging  
Entrance & Exit Management  
Extensible Storage

---

## **ACCESS CONTROL**

Attendance  
Visitor Management  
Elevator Control  
Video Intercom

---

## **ALARM MANAGEMENT**

---

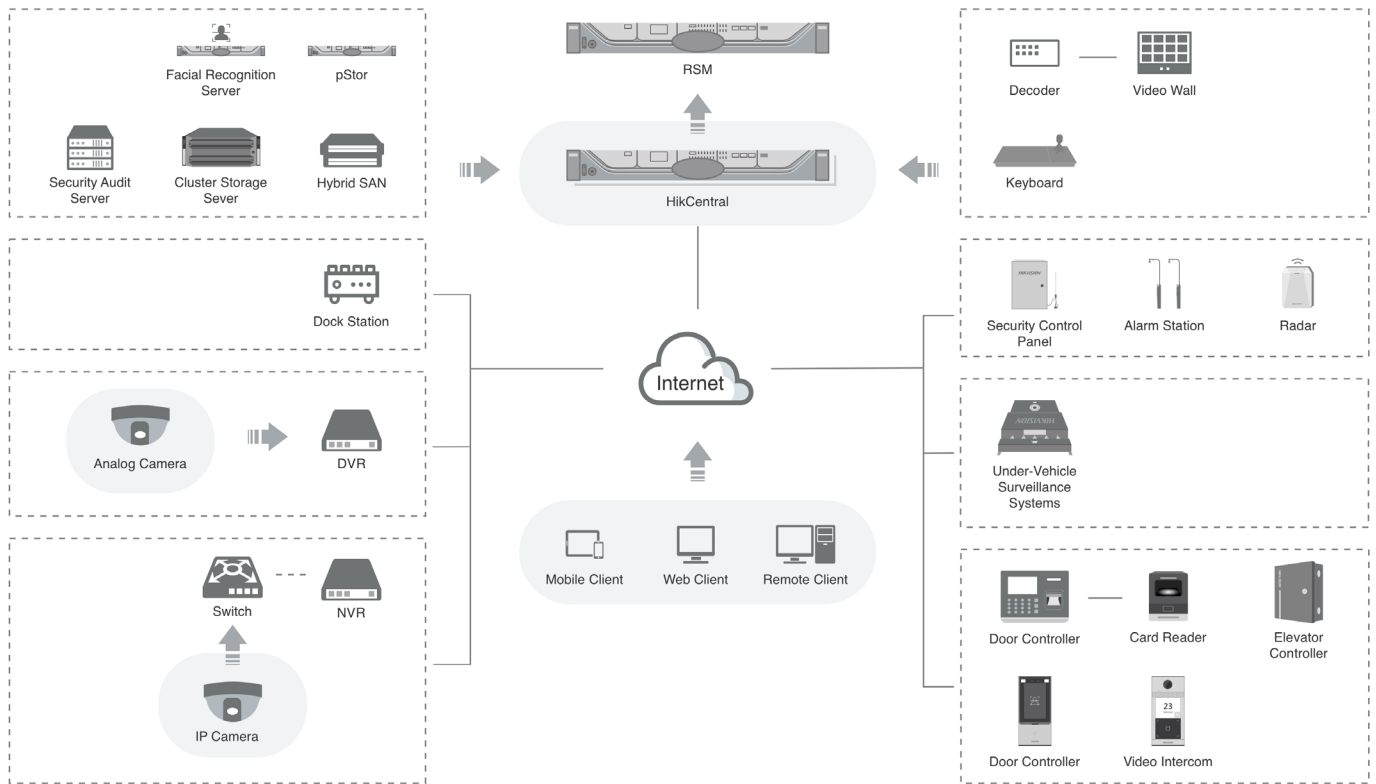
## **MAINTENANCE**

---

## **OPEN PLATFORM**

# SYSTEM

## System Architecture



### Server Layer

- Central management on HikCentral Professional as master / slave backup
- Flexible storage achieved by pStor, Hybrid SAN, and Cluster Storage Server
- Expandable applications on RSM

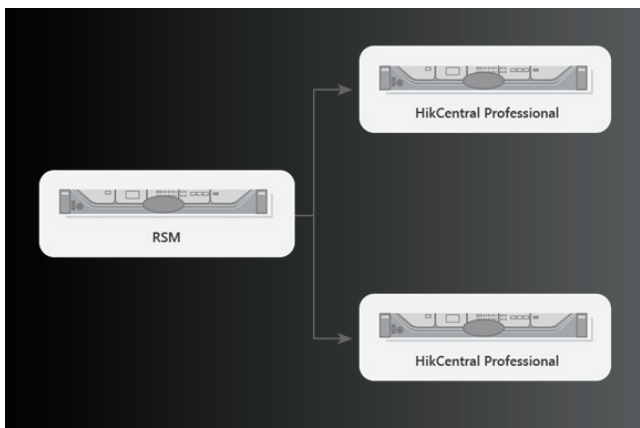
### Device Layer

- Access analog cameras via DVR, access IP cameras directly or via NVR
- Decoder display on Smart Wall
- Security control panel and alarm station
- Access control via door controller and Face Recognition Terminal



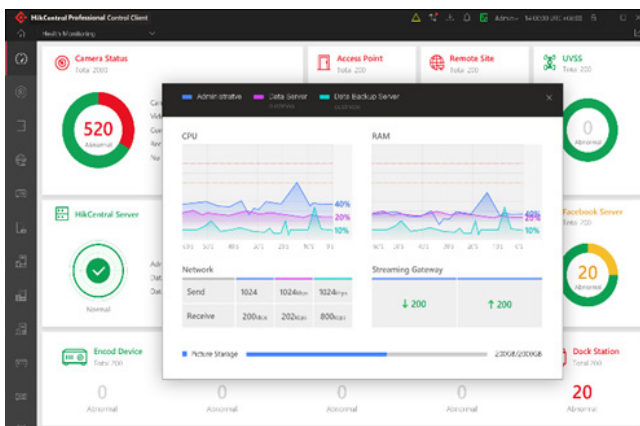
## Key Advantages

HikCentral Professional covers not only basic functions, but also site implementation, daily maintenance, and user accessibility. The following are some key advantages.



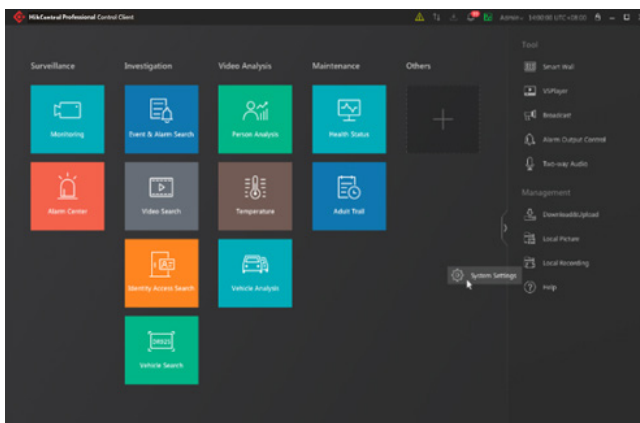
### Scalable

RSM (Remote Site Management) enables single-site to multi-site expansion, making it convenient for users to remotely manage servers located at different sites. This is an ideal solution for companies or organizations with branches.



### Maintainable

Quick and accurate error diagnoses for efficient maintenance. The system will diagnose and generate detailed event logs, device logs, and health monitoring. It also supports batch firmware upgrades.

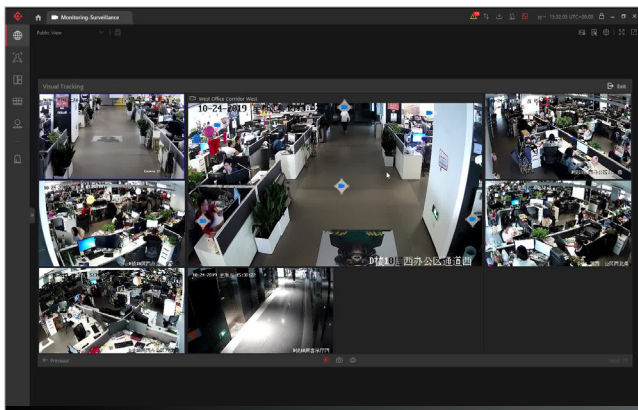


### Friendly

Drag-and-drop application icons on the Control Client to easily create your own user-defined dashboard. The monitoring view also supports self-adaptive window division and more.

# VIDEO

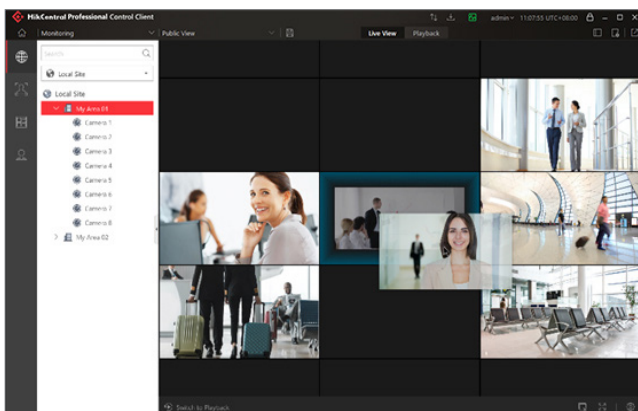
## ▶ Live View



---

## Visual Tracking

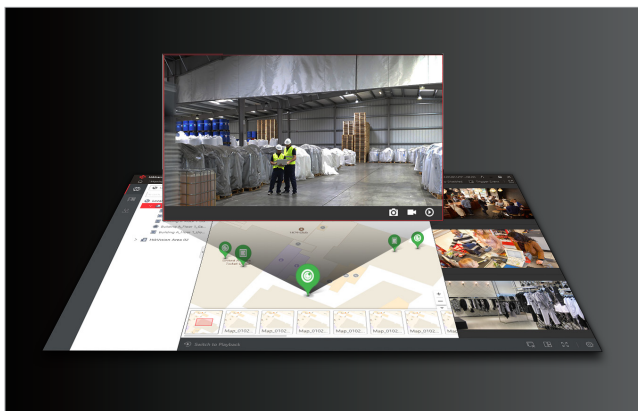
- Supports connection with common cameras.
- Detailed and easy tracking of the complete moving process.
- Supports export of a complete action video of a certain target in the visual tracking mode.



---

## Adaptive Window Division

Auto-adapting window division brings a more intuitive experience and more visual control.



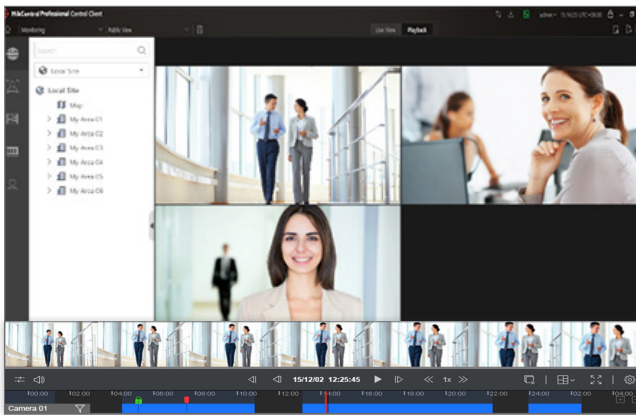
---

## Map Management

- Configure maps for specific areas
- Label cameras as resources, then drag and drop them to a destination on the map
- Control video live view and play back, as well as find other operations on the map
- Receive and respond to alarms in real-time



# ▶ Playback



## Playback Features

Video playback function offers various useful features, including:

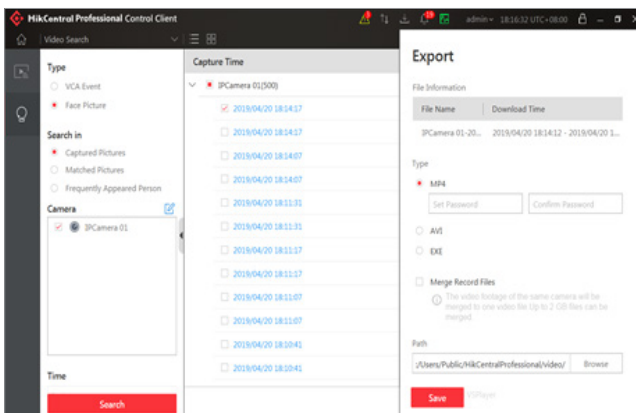
- Smooth playback/Sub-stream playback
- Transcoded playback/Frame-extracting playback
- Multiple time-zone playback
- Quick incident location with thumbnails
- Adding tags to suspicious events for later review
- Locking video footage to prevent overwriting



## VCA Search

“After-the-fact” VCA search provides convenient analyses, including:

- Motion Analysis
- Line Crossing Detection
- Intrusion Detection



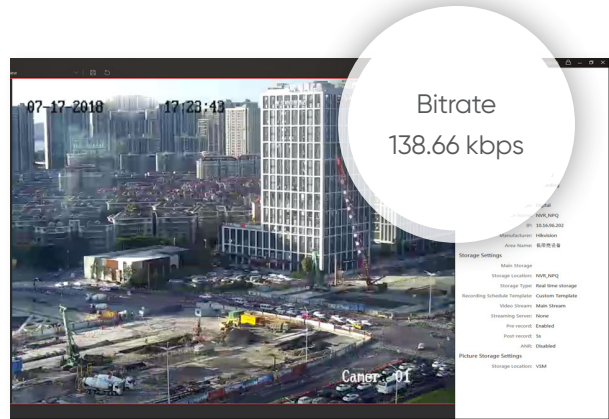
## Video Export

- Supports merging several clips into one video file for downloading
- Files can be exported in exe / avi / mp4 formats

# Video Network Optimization

## Low Bandwidth Network Adaptability

Smooth Streaming automatically adjusts bitrate and resolution between clients and NVRs / IPCs according to real-time network conditions, which makes the live view more fluid.

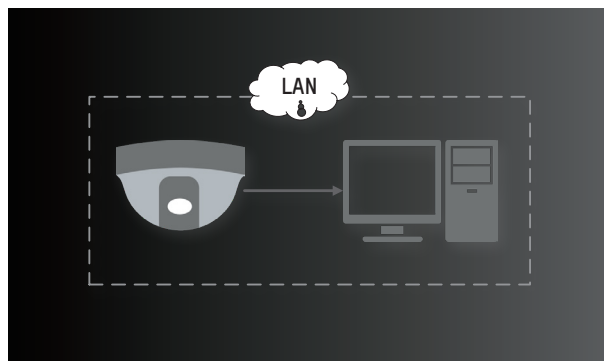
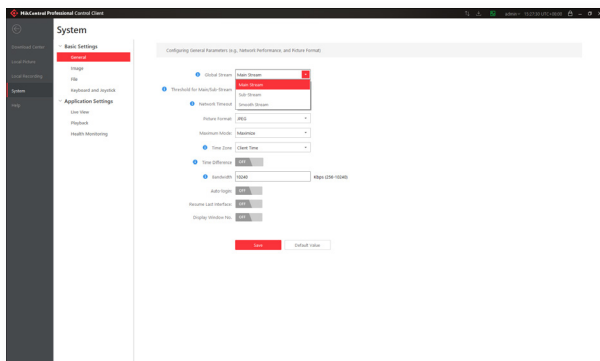


## Global Stream Setting

For the live stream in the global view, select the default stream. If the network is operating smoothly, select the main- or sub-stream. If the network is lagging, select smooth stream.

## Direct Stream Policy

When the system detects that the Control Client and the device are in the same local-area network, the video stream can be obtained directly.

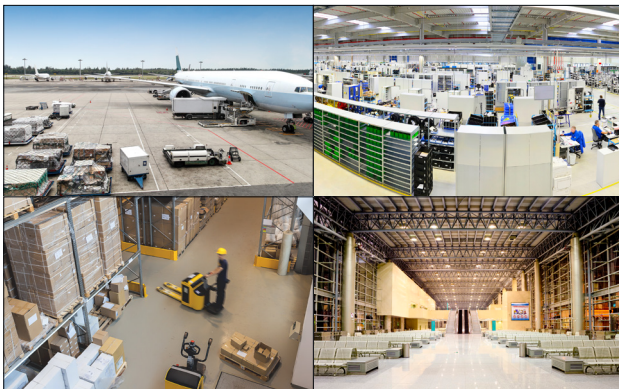




## ▶ Smart Wall

### Decoding Devices

- Video streaming on the Smart Wall is supported
- Powerful decoding devices render stunning imagery on Smart Wall setups
- The number of screens that can be displayed depends on the model of decoding device
- Users can choose single, joint, division, and roaming mode for each system



Single Mode



Joint Mode



Division Mode

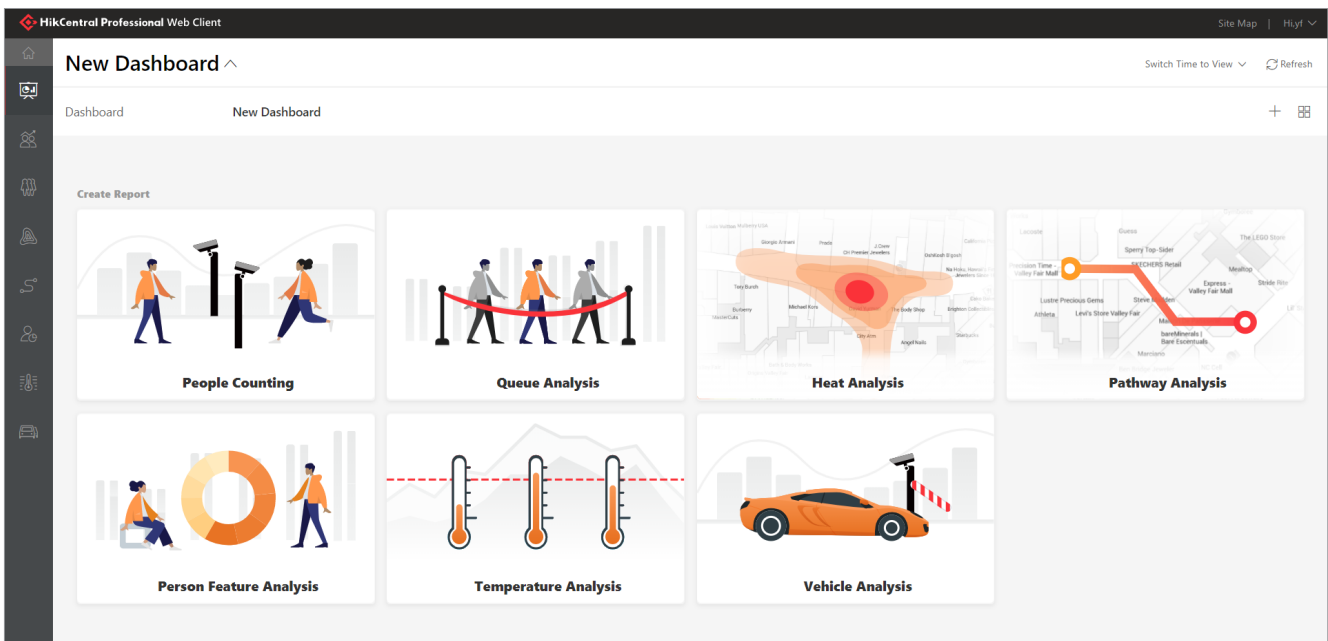


Roaming Mode

# ▶ Video Analysis

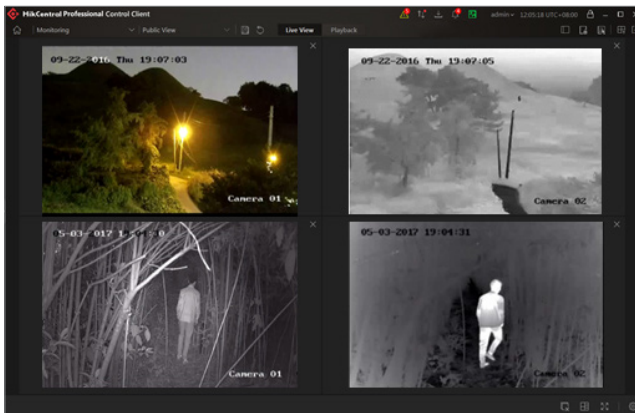
## BI Dashboard

Our BI dashboard provides a flexible and customized tabular view window to inform decision makers with business analysis reports. As a newly added report, Person Feature Analysis shows the proportion of persons with different features, including gender and age group.



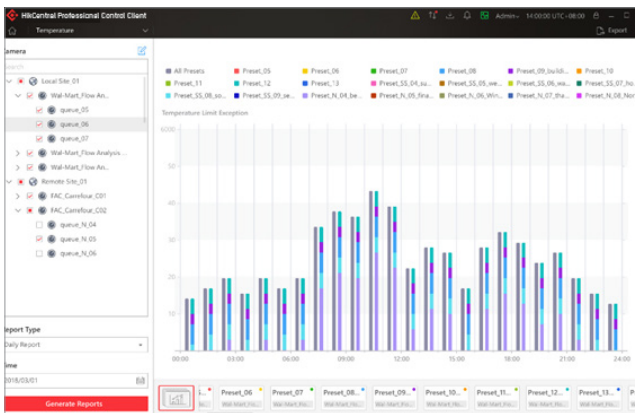


# ▶ Thermal Imaging



## Thermal Imaging Preview

- Great adaptability to poor environmental conditions, such as darkness, high-contrast backlighting, fog, and haze
- Effective detection of hidden targets in darkness or masked by other objects
- Extended detection distance
- Higher alarm accuracy is achieved by using intrusion detection, line crossing detections, etc.



## Temperature Statistics

- Temperature measurement at preset points and trails
- Records abnormal data as well as maximum and minimum temperature at all preset points
- Generates anomaly statistics for all measurement points
- Monitors temperature changes at specific locations
- Notices abnormal situations to avoid potential risks
- Exports reports for critical review

# Entrance & Exit Management

Flexible entrance modes and authorization rules enhance efficiency and reduce resource usage.

## Vehicle entrance & exit management

Customizes release rules for familiar/unfamiliar vehicles discretely

## Leasing agreement management

Supports configurations for parking space allowance where multiple companies lease parking spaces

## Information display

Displays welcome message and vehicle information on LED screen

## Alarm configuration

Customizes alarm rules such as exceeding time limits or no-parking periods

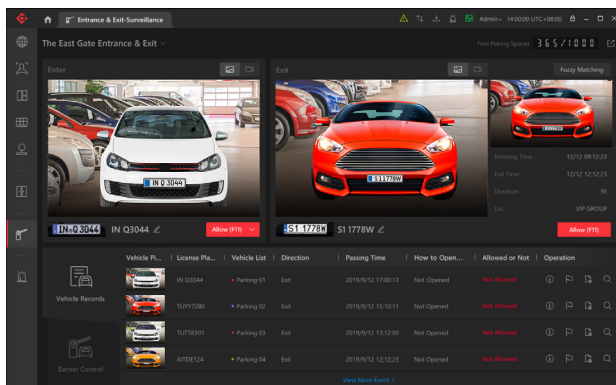
## Strong capacity

Supports up to 8 traffic lanes and relays events triggered by ANPR cameras, video intercoms and access control devices



## Watchhouse Mode

In the professional Watchhouse mode, all entrance & exit related information is compiled to help staff quickly let vehicles exit.



## Information display of passing vehicles

Displays images and real-time video of passing vehicles, supporting manual verification

## General matching

General preliminary comparison match for vehicles not fully recognized when exiting

## Manual release

Supports manual release and records the justification

## Displays remaining parking spaces

Shows number of remaining parking spaces in real-time

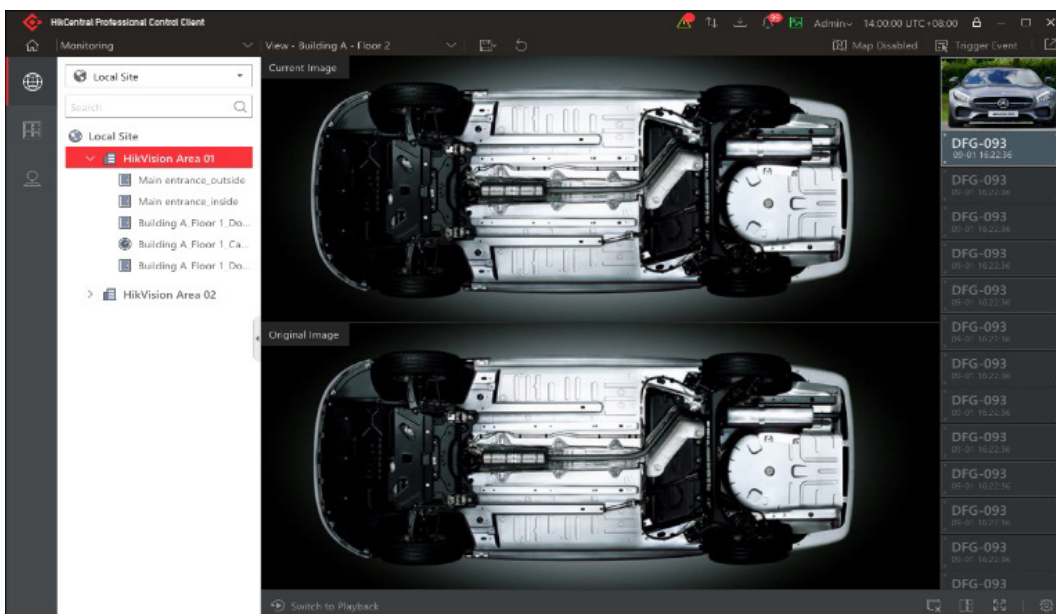
## Historical record search

Easy and efficient history tracking

## Under Vehicle Surveillance System (UVSS)

### Advanced UVSS

- Captures vehicle undercarriage images
- Synchronizes ANPR camera data with vehicle images
- Suits various vehicle models
- Displays entire vehicle chassis in one image
- Features high-durability and high-quality imaging with low distortion





## ► Extensible Storage



### Scalable Storage

Video and images can be extended by reusing existing devices for redundant backup. Image storage is flexible and based on video channels.



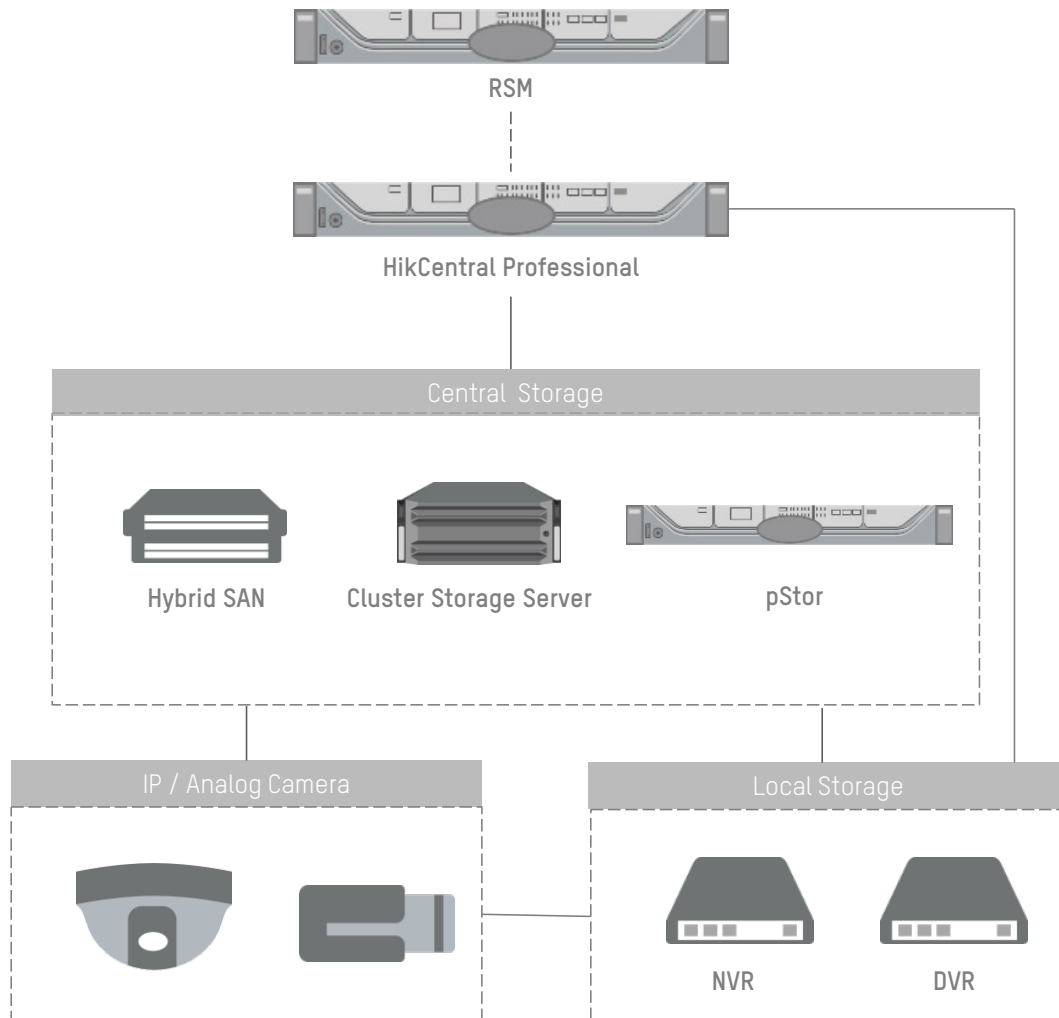
### Multiple Storage Media

Video and images can be stored on various media storage platforms, such as pStor, Hybrid SAN, and Cluster Storage Servers.



### Rich Functionalities

HikCentral Professional offers functionalities such as video backup during idle periods and event-triggered video recording.



# ACCESS CONTROL

## Key Features ▶



Linkage between CCTV system and access control



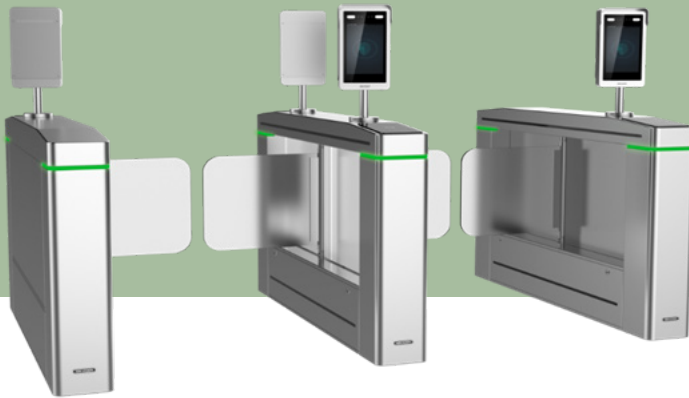
One-key click will instantly lock or unlock all doors



Regional people counting



Face recognition turnstile



## Face Recognition Turnstile

HikCentral Professional integrates Hikvision's turnstile with Face Recognition Terminals and other third-party gates as well.

## ▶ New functions

### Attendance

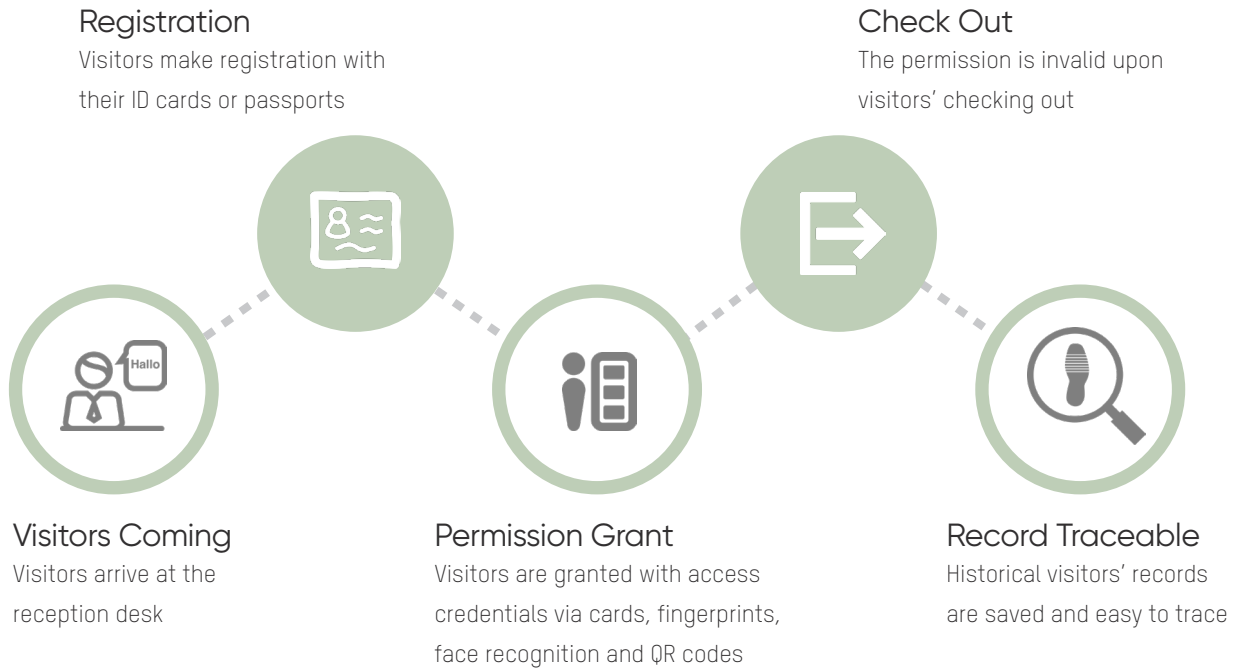
**Automated Attendance by Face Recognition**  
Supports automated attendance by face recognition, which is more convenient and efficient.

**Easy Third-Party Integration**  
Easy integration with third-party attendance system and automatically generates attendance reports with multiple formats to choose from.

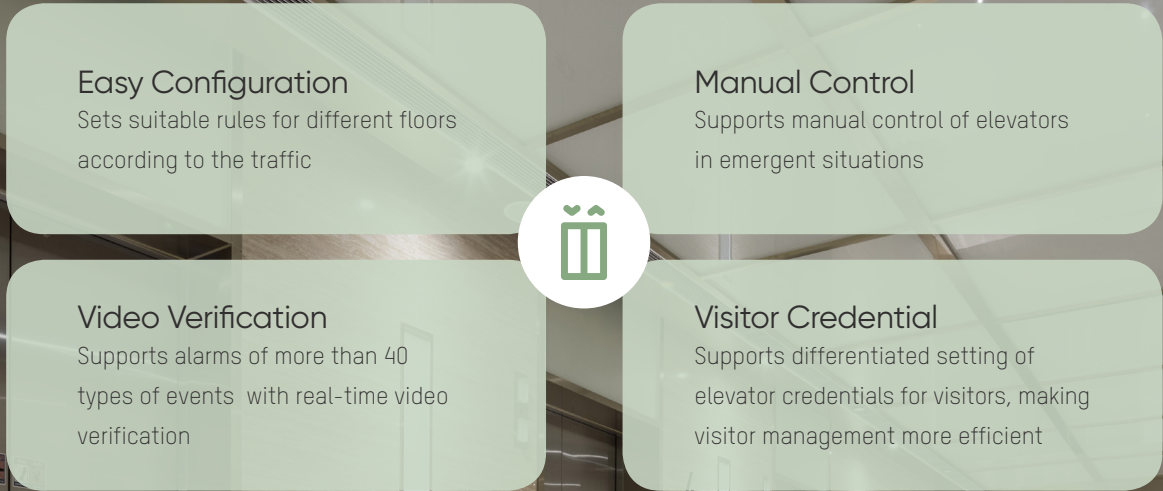
**Customized System Configuration**  
Supports complex attendance setting to satisfy various needs, including working time, weekend, late arrival and early departure, absence, overtime working, leave types, and etc.

# Visitor Management

How does our visitor management module works?



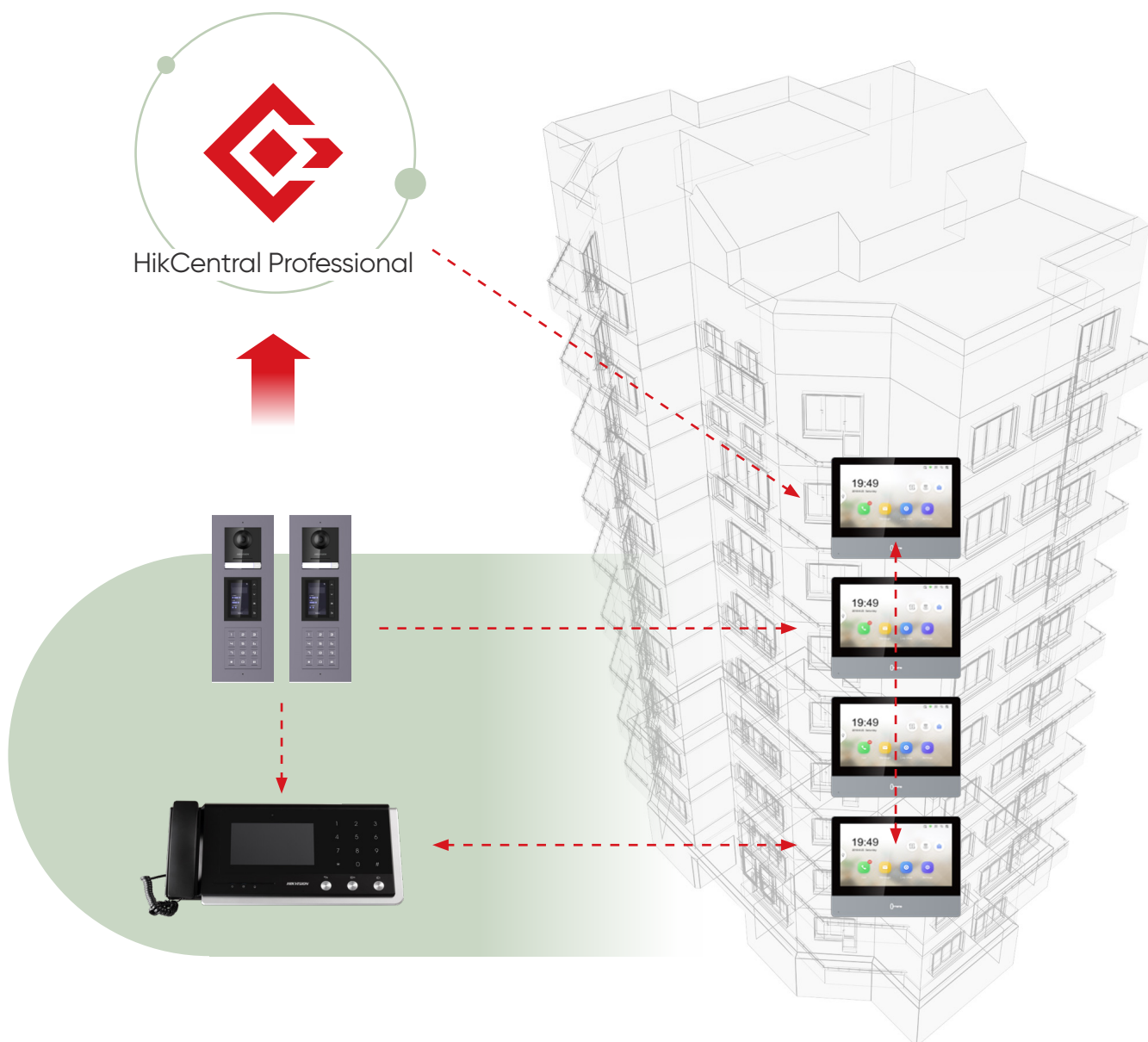
# Elevator Control





## Video Intercom

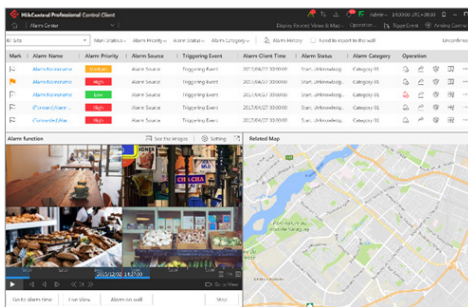
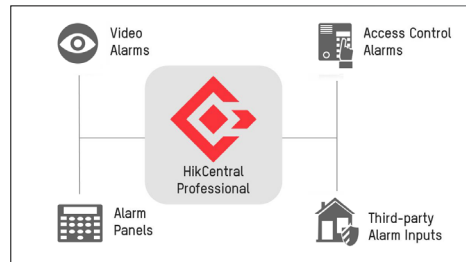
- Serves as a centralized platform to manage the video intercom system
- Supports configuring related devices and setting rules for device interaction
- Uniformly configures personnel access permissions and remotely controls access control
- Pushes calls from the door station to the management staff



# ALARM MANAGEMENT

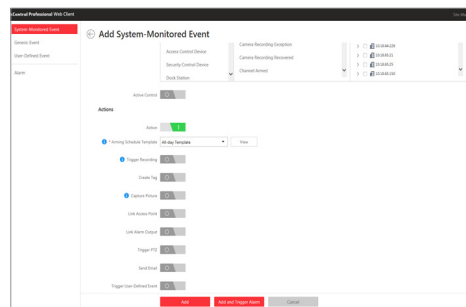
## Alarm Sources

HikCentral Professional can centrally manage various alarm sources, such as video, access control, alarm panels, and third-party alarm inputs.



## Alarm Center

- Real-time display of all kinds of alarms
- Linked videos and locations will be displayed automatically when an alarm is selected



## Alarm Linkage

- Multiple actions can be linked to alarms
- Specified actions will be taken automatically upon alarm triggering

## Composite Alarm

A composite alarm enables arming or disarming in order to promote flexibility and accuracy of alarm management. For example, you may use composite I/O signals and motion detection events by installing infrared beams, effectively reducing the false alarm rate.

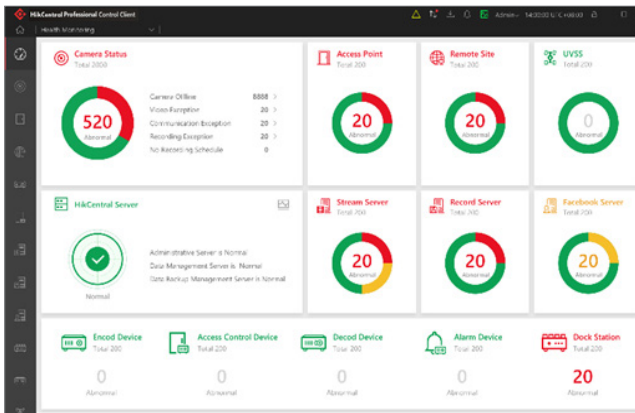


## Alarm Escalation

Alarm escalation takes place when the primary operator does not respond. An unprocessed alarm will be forwarded and escalated to upper level management when the original operator ignores.

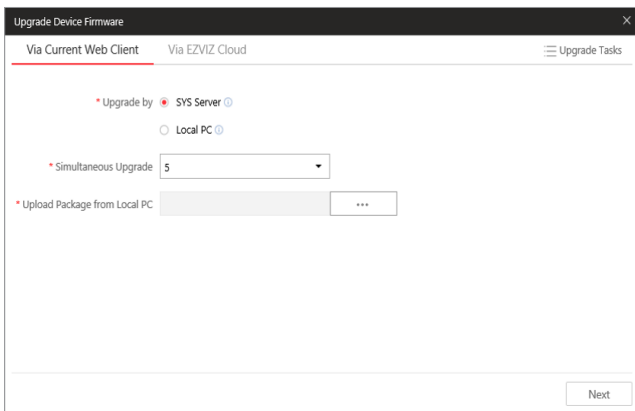


# MAINTENANCE



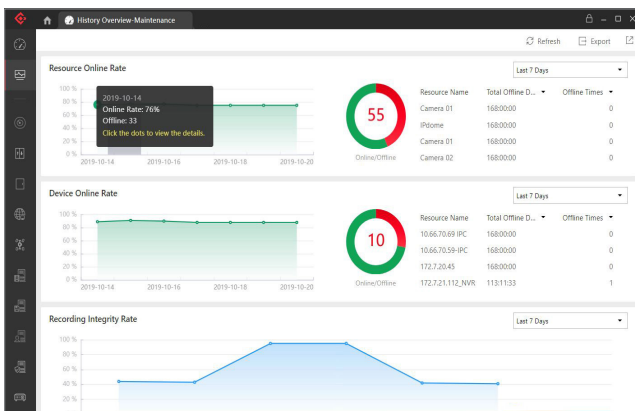
## Health Monitoring

- Monitoring panel is adaptable and can be viewed on Windows OS
- Displays system information, such as CPU, RAM, network speed and video streaming usage
- Users can define a threshold according to network status



## Firmware Batch Upgrade

Supports upgrading of multiple devices' firmware simultaneously



## History Overview - Maintenance

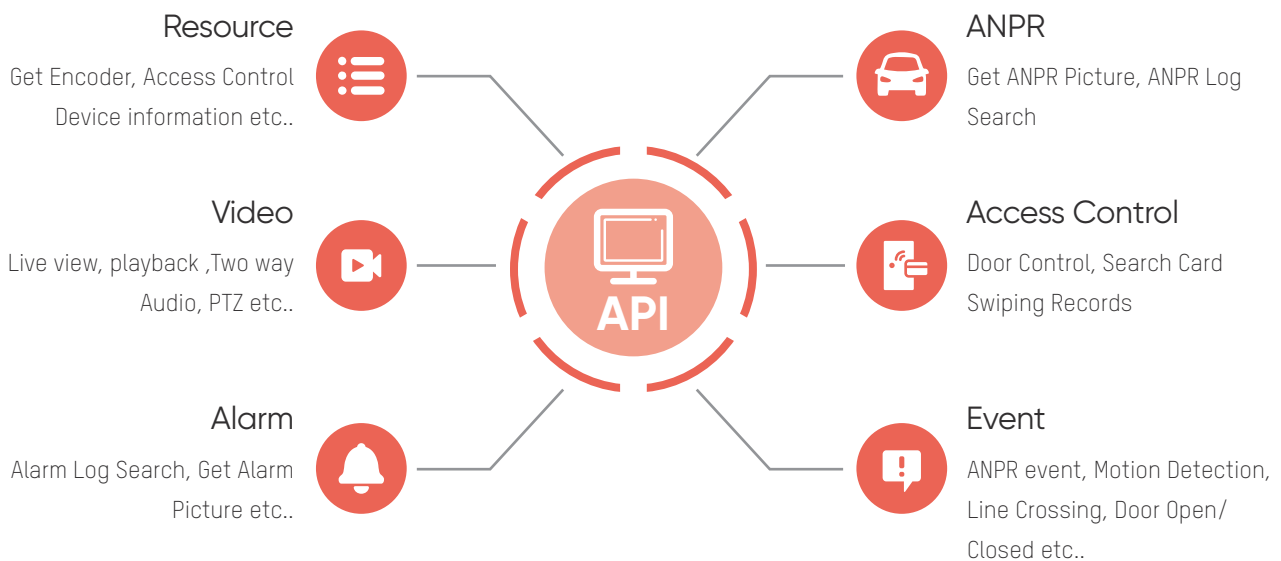
- Overview of resource online rate, device online rate and recording integrity rate within certain period
- Helping better understand the operation status of the system



# OPEN PLATFORM

## Open API

Collaborative, goal-oriented development creates the most useful and customizable applications. Hikvision has created an open Software Development Kit for innovated systems to meet any particularized demand.



Interface  
protocol  
integration

API  
documentation

Demonstrative  
applications  
with  
sample code  
and  
documentation

Trial license  
available  
on HikCentral  
Professional

**• Headquarters**

No.555 Qianmo Road, Binjiang District, Hangzhou 310051, China  
+86-571-8807-5998  
overseasbusiness@hikvision.com

**• Australia**

+61-2-8599-4233  
salesau@hikvision.com

**• Europe**

+31-23-5542770  
sales.eu@hikvision.com

**• Hungary**

info.hu@hikvision.com

**• Kazakhstan**

+7-727-9730667  
nikia.panfilov@hikvision.ru

**• New Zealand Ltd**

+61-1300557450  
www.hikvision.com.au

**• Russia**

+7-495-669-67-99  
saleru@hikvision.com

**• Tashkent**

+99-87-1238-9438  
uzb@hikvision.ru

**• UK & Ireland**

+01628-902140  
sales.uk@hikvision.com

**• Brazil**

+55-11-3318-0050  
Latam.support@hikvision.com

**• France**

+33(0)1-85-330-450  
info.fr@hikvision.com

**• India**

+91-22-28469900  
sales@pramahikvision.com

**• Korea**

+82-(0)31-731-8817  
sales.korea@hikvision.com

**• Panamá**

sales.centralamerica  
@hikvision.com

**• Singapore**

+65-6684-4718  
sg@hikvision.com

**• Thailand**

+662-275-9949  
sales.thailand@hikvision.com

**• USA**

+1-909-895-0400  
sales.usa@hikvision.com

**• Canada**

+1-866-200-6690  
sales.canada@hikvision.com

**• Germany**

+49-69-401507290  
sales.adch@hikvision.com

**• Indonesia**

+62-21-2933759  
Sales.Indonesia@hikvision.com

**• Malaysia**

+601-7652-2413  
sales.my@hikvision.com

**• Philippines**

sales.ph@hikvision.com

**• South Africa**

+27877018113  
sale.africa@hikvision.com

**• Turkey**

+90(216)521-7070-7074  
sales.tr@hikvision.com

**• Vietnam**

+84-974270888  
sales.vt@hikvision.com

**• Colombia**

sales.colombia@hikvision.com

**• Hong Kong, China**

+852-2151-1761  
info.hk@hikvision.com

**• Italy**

+39-0438-6902  
info.it@hikvision.com

**• Mexico**

+52 55 2624 0110  
sales.mexico@hikvision.com

**• Poland**

+48-22-460-01-50  
info.pl@hikvision.com

**• Spain**

+34-91-737-16-55  
info.es@hikvision.com

**• UAE**

+971-4-4432090  
salesme@hikvision.com



CENTRAL.  
COLLABORATIVE.  
INTELLIGENT.

**HIKVISION**

Follow us on social media to get the latest product and solution information



HikvisionHQ



Hikvision



HikvisionHQ



Hikvision\_Global



hikvisionhq



Hikvision Corporate Channel



[www.hikvision.com](http://www.hikvision.com)